



MOTEX[®]

- RFID: TRANSPONDER PROCESSING SYSTEMS
- SMART LABEL/TAG/TICKET MACHINE
- ROTARY PRINTING MACHINE
- GLUE & SILICON COATING MACHINE
- MARKING & ENGRAVING MACHINE

www.motex.co.kr

M°TEX®

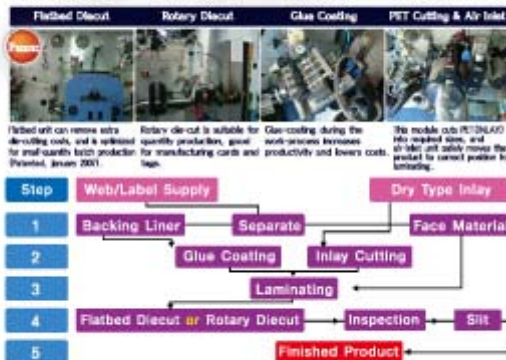
RFID



Smart Label & Tag Converting Machine

MXCM-018

Web Width	Max 160 mm
Unwinding/Rewinding Diameter	Max ϕ 600 mm
Web Thickness	0.05mm~0.45mm
Rotary Die Diameter	Min ϕ 60~Max ϕ 200
Flatbed Die-cutting Pitch	Min160mm~Max320mm
Maximum Speed	Max 90m/min
Inlay Type	13.56Mhz (ISO15693) 900Mhz (GEN2)
Electrical Spec	
<ul style="list-style-type: none"> - 380V AC / 3Phase - PLC & MOTION Control + 12" color touchscreen - Power Consumption : 20KW at 220~460VAC, 3-Phase - Hot Melt Glue Coating - Inkjet printer - Servo Motor - Dimension : L: 5015mm , W: 2630mm , H: 2430mm 	



Flatbed Diecut Rotary Diecut Glue Coating PET Cutting & Air Inlet

Flatbed unit can remove extra die-cutting costs, and is optimized for small quantity batch production (Patented, January 2001). Rotary die-cut is suitable for quantity production, great for manufacturing cards and tags. Glue-coating during the production increases productivity and lowers costs. The mobile unit (OPTION) also required time, and air inlet unit safely moves the product to correct position for laminating.

Smart Label & Tag Inspection Equipment

Smart Label & Tag Inspection Equipment

Labels and tags are detected to guarantee 100% output quality.

Web Width	Max 160 mm
Unwinding/Rewinding Diameter	Max ϕ 600 mm
Maximum Speed	Max 90m/min
Inlay(PET) Type	13.56Mhz (ISO15693) 900Mhz (GEN2)
Electrical Spec	
<ul style="list-style-type: none"> - 220V AC / 3Phase - PLC Control + touchscreen - Total Servo axes : 1 Axis - Power Consumption : 1.3 KW at 220VAC, 3Phase - Inkjet Printer - Dimension : L: 1740mm , W: 560mm , H: 1360mm 	



• MXCM-018 • MXCM-014F • MXCM-014R
RFID TRANSPONDER PROCESSING SYSTEMS



Flatbed Diecut
MXCM-014F



MXCM-014R
Facestock & Liner
Dual Rotary Die CUT

Quantity Production Batch Production

MXCM-014R • MXCM-014F

Web Width	Max 160 mm	Electrical Spec - 380V AC / 3Phase - Fully Synchronized Motion & Logic Control with color touchscreen - Total Servo axes : 16axes - Power Consumption : 20KW at 220-460VAC, 3Phase - Hotmelt Glue Coating - Inkjet Printer - Dimension : L: 5015mm , W: 950mm , H: 1986mm
Unwinding/Rewinding Diameter	Max ø600 mm	
Web Thickness	0.05mm~0.45mm	
Rotary Die Diameter(D14R)	Min ø60~Max ø200	
Flat Bed Diecutting Pitch(O14F)	Min160mm~Max320mm	
Maximum Speed	Max 90m/min	
Inlay(PET) Type	13.56Mhz (ISO15693) 900Mhz (GEN2)	



Innovative Smart Card Production
Tag-Embedded Smart Cards

SMART CARD INJECTION Machine

- Production completed in "In-line process"
- 300% Productivity Increase, in comparison to manual, PVC-sheet production
- Power consumption : 220-460V, 3P, 60KW

Prod' n
Process

Inlay Supply → Inlay Diecut → Obtain Inlay → Insert into Mould → Injection → Obtain Card → Test → Print → Pack

M°TEX®

PRINT

Now **M°TEX®** can solve every trouble of printing!
30-years of experience & our spirit in the field have been planted.



Printing Unit

- Center-drum renders high printing focus.
- High-Resolution Image Printing
- Ink-washer makes color-change easier.



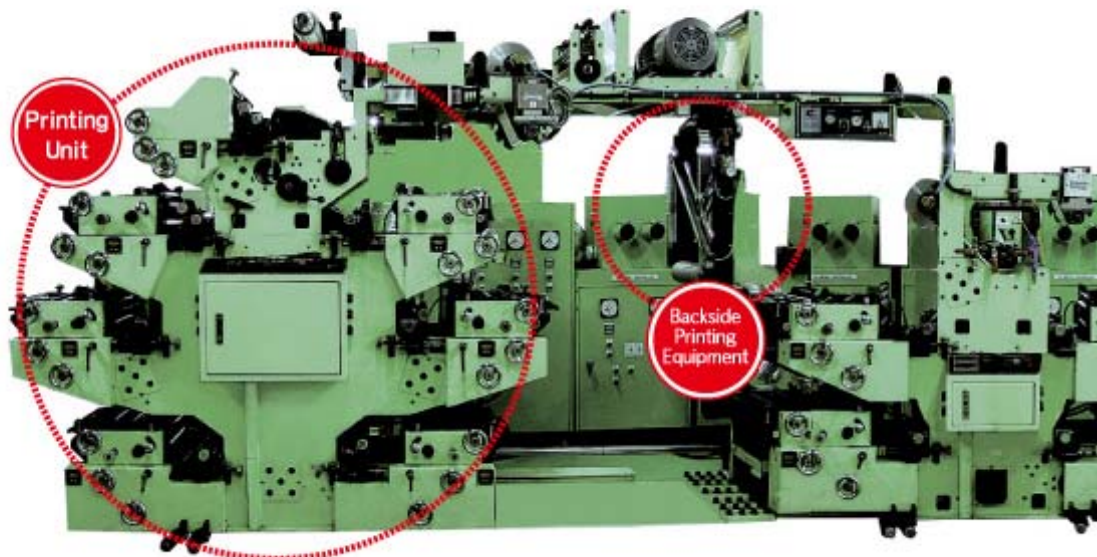
Backside Printing Equipment

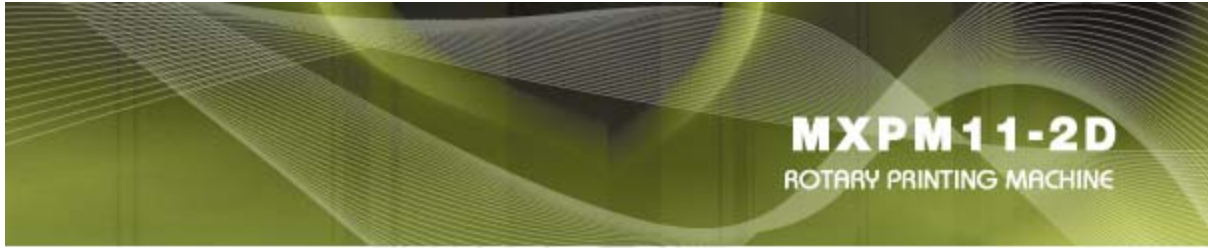
- Front & backside can be printed simultaneously.



Punching & Storage Unit

- Half and Whole Punching removes numerous operations into in-line process, contributing to higher productivity.





Most-Advanced SIEMENS Servo Motor Adopted

What is different?

- Improved Printing Clarity!
- High-Focus during Start-and-Stop Operation!
- Environmental-friendly, Low-noise Design!
- Easy operation reduces Paper-loss !



Turret System Innovation Patent

- A total of 4 pivots operating together enables non-stop production, which contributes to higher productivity and reduction of paper-loss.



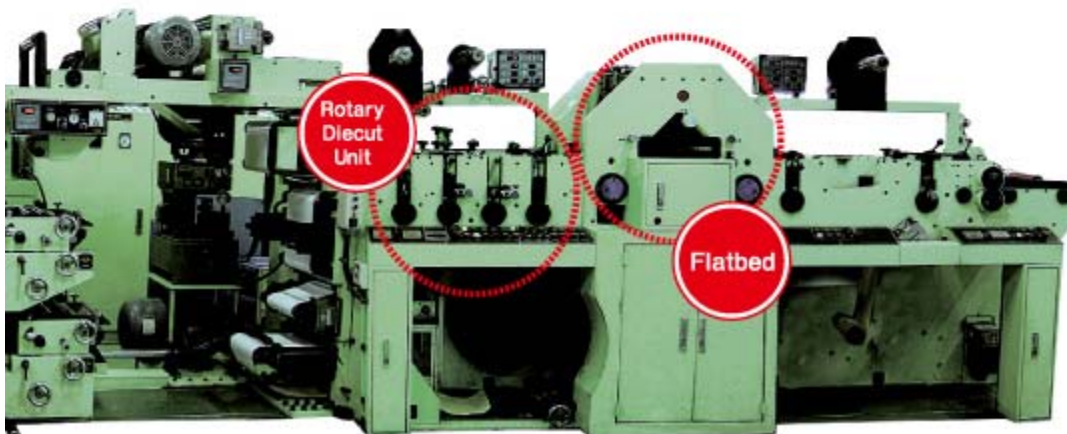
Rotary Diecut Unit

- High productivity, especially for quantity production.
- Use of quality material benefits long life cycle.



Flatbed Innovation Patent

- (1) Reasonable knife price
- (2) Suitable for small-quantity batch production.
- (3) Easy diecut for special type of paper material.



M^oTEX[®]

M^oTEX Printing Machine Specification

web width	Max 250 mm (10")
unwinding/rewinding diameter	Max Ø650 mm
laminating sheet unwinding diameter	Max Ø400 mm
web thickness	0.05 mm ~ 0.45 mm
plate cylinder diameter	Max Ø50 ~ Max Ø100
rotary die diameter	Max Ø50 ~ Max Ø100
flat bed decutting pitch	Min 158.75 mm ~ Max 317.5 mm
sheet cut length	Min 158.75 mm ~ Max 317.5 mm
automatic slitter	6 sets as standard
tension control (unwinding)	powder brake
tension control (rewinding)	powder clutch
tension control (rewinding)	Max 80 m/min
flat bed decutting speed	Max 50 m/min cutting
main motor	AC Motor/ AC Servo Motor
UV curing system (air cool)	3 Kw



7-Color Printing Machine

MXPM7-DT

Web width	Max 250 mm (10")	Tension control(rewinding)	powder clutch	Electrical Spec - 380V AC / 3Phase - Fully synchronized motion & logic control with color touch control - Total 6 servo Axis - Power consumption : 48KW at 220~480VAC, 3Phase
Unwinding/rewinding diameter	Max Ø650mm	Printing speed	Max 70m/min	
Laminating sheet unwinding diameter	Max Ø450mm	Flat bed decutting speed	Max 50m/min cutting	OPTIONAL FEATURES - Flat bed decutting(horizontal press) - Corona unit - Hole punching unit - Turret system -dust remover system
Web thickness	0.05mm~0.45mm	UV curing system (air cool)	3Kw + 8 UV-lights	
Plate cylinder diameter	Min Ø50 - Max Ø100	Dual Rotary decut		
Rotary decutting diameter	Min Ø50 - Max Ø100	Slitter		
Flat bed decutting pitch	Min158.85mm~Max317.5mm	EPC		
Tension control(unwinding)	powder brake	Machine Size : L: 7800mm , W: 1250mm , H: 2000mm		

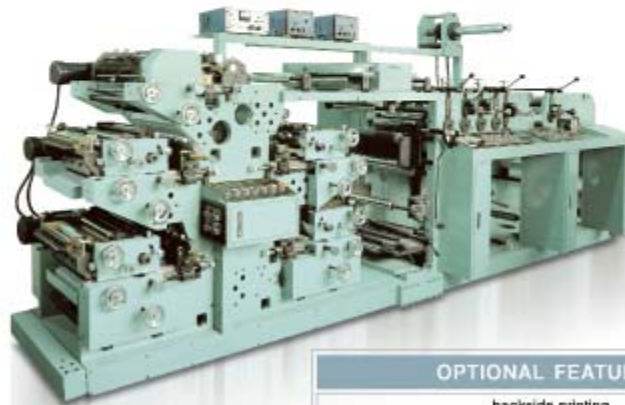
• **MXPM6-D**
 • **MXPM5-D**
 ROTARY PRINTING MACHINE



MXPM6-D

STANDARD FEATURES
Antistatic device
automatic ink wash
220-480V 3P 29KW
L : 4700 mm W : 1300 mm H : 1900 mm

OPTIONAL FEATURES
backside printing
corona unit
cooling system
flatbed die cut
turret system
hole-punching equipment
UV curing system 3Kw + 7 UV-lights (addition avail.)
touch panel
UV coating unit
dust remover system



MXPM5-D

STANDARD FEATURES
Antistatic device
automatic ink wash
220-480V 3P 24KW
L : 6100 mm W : 1300 mm H : 1900 mm

OPTIONAL FEATURES
backside printing
corona unit
cooling system
flatbed die cut
turret system
hole-punching equipment
UV curing system 3Kw + 6 UV-lights (addition avail.)
touch panel
UV coating unit
dust remover system

M°TEX®



MXPM2-V

STANDARD FEATURES

Antistatic device
automatic ink wash
220~460V, 3P, 11.5KW
L : 2500 mm W : 1250 mm H : 1900 mm

OPTIONAL FEATURES

turret system
hole-punching equipment
UV curing system 3Kw + 2 UV-lights (addition avail.)
touch panel



Innovation Patent

STANDARD FEATURES

Antistatic device
automatic ink wash
220~460V, 3P, 13.5KW
turret system
L : 5000 mm W : 1500 mm H : 1900 mm

MXPM2-VT

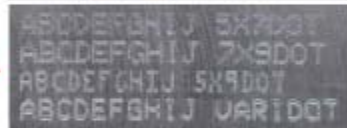
OPTIONAL FEATURES

hole-punching equipment
UV curing system 3Kw + 2 UV-lights (addition avail.)
touch panel

• **MXPM2-V** • **MXM-001**
 • **MXPM2-VT** • **SLIT-1200**
 ROTARY PRINTING MACHINE MARKING MACHINE SLITTING MACHINE



Sample ▶

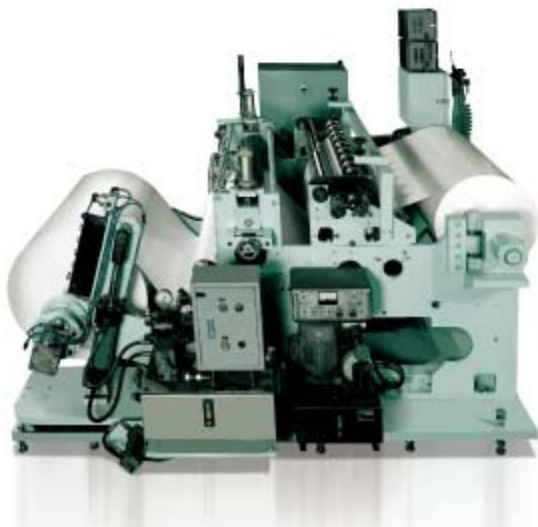


Marking & Engraving Machine

MXM-001

High-quality marking for effective management of production and inventory, and information tracking.

Features	
Marking Font	5 X 7 dot / 7 X 7 dot / Varidot / 5 X 9 OCR / 5 X 9 Varidot
Marking Speed	Max. 4 letters/sec.
Marking Area	150 mm X 95 mm
Letter Size	0.18 mm X 50 mm
Data Matrix	2D Bar Code Marking
File Storage	Save the marking data in the flash memory
Power Unit	100~220 V, INPUT POWER : DC 24 V



SLITTING MACHINE
SLIT-1200

Specification	
Max Web Width	1200 mm
Slitting Speed	0~250 m/min
Unwinder Web Diameter	∅ 1,000 mm
Unwinder Core	∅ 76 mm (3")
Rewinder Web Diameter	∅ 800 mm
Rewinder Core	∅ 76 mm (3")
AC Motor Inverter Control	
Powder Brake And Clutch System	
Web Guide	Epc Control
Power	220~460V, 3P, 5.5KW

M°TEX®

SLIT

M°TEX SLIT MACHINE achieved Excellence in Quality

- Constant Web Edge Control
- Web placed onto unwinder towards slitting & rewinding units, for easier & accurate setup, lowers paper-loss.
- Convenient replacement of knives and rewinding shafts.
- High Productivity

MODEL	TENTION CONTROL	Web Guide	OPTIONAL FEATURES
SLIT-220	Semi-Auto	Semi-Auto	Semi-turret system
SLIT-250			
SLIT-300	Powder clutch & brake	EPC control	
SLIT-350			
SLIT-450			
SLIT-1200			



▲ Options Scrap Crusher

SLIT-300, 350, 450			
Max Web Width	300 mm	350 mm	450 mm
Slitting Speed	0~250 m/min		
Unwinder Web Diameter	φ700	φ800	φ800
Unwinder core	φ76 (3")		
Rewinder Web Diameter	φ300	φ400	φ450
Rewinder core	φ26~ φ76		
AC Motor Inverter Control			
Powder Brake and Clutch System			
Web Guide	EPC Control		
Electric Power	220 V/380 V, 50/60 Hz, 2P/3P, 1.5 Kw/1.5 Kw/2.5 Kw		
Size	SLIT-300	L: 1400 mm W: 800 mm	H: 1100 mm
	SLIT-350	L: 1400 mm W: 850 mm	H: 1100 mm
	SLIT-450	L: 1400 mm W: 900 mm	H: 1100 mm



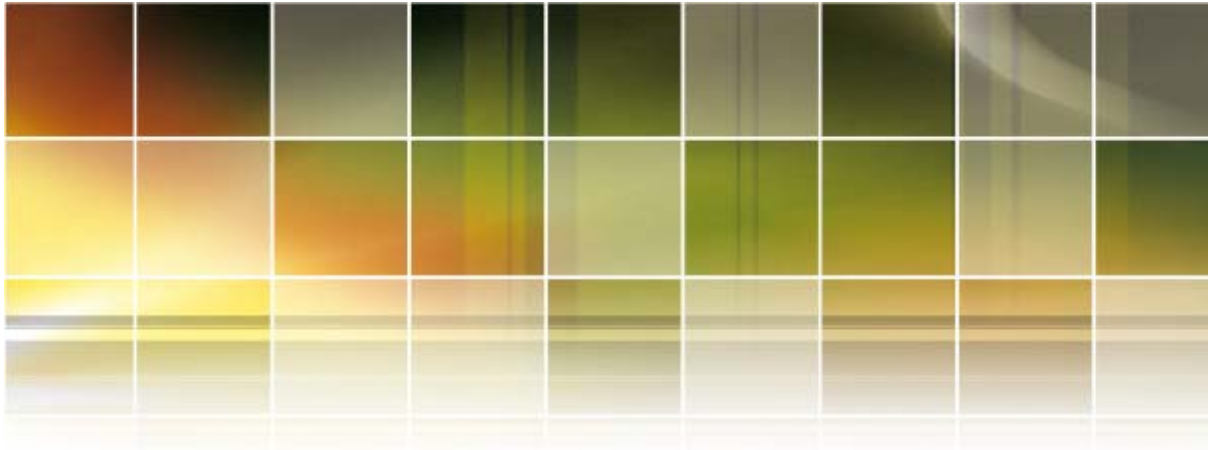
• **SLIT-300,350,450**
 • **SLIT-220 • SLIT-250**
 SLITTING MACHINE

SLIT-220	
Max Web Width	220 mm
Slitting Speed	0-150 m/min
Unwinder Web Diameter	φ500 (Max)
Unwinder Core	φ 70
Rewinder Web Diameter	φ100
Rewinder Core	φ 12- φ45
AC Motor Inverter Control	
Semi-Auto Turret System	
Electric Power	220 V/380 V, 50/60 Hz, 2 P/3 P, 0.75 KW
Size	L: 680 mm W: 750 mm H: 1350 mm



SLIT-250	
Max Web Width	250 mm
Slitting Speed	0-150 m/min
Unwinder Web Diameter	φ600 (Max)
Unwinder Core	φ 76 (3")
Rewinder Web Diameter	φ 120
Rewinder Core	φ 12 - φ76
AC Motor Inverter Control	
Powder Brake And Clutch System	
Web Guide	EPC Control
Electric Power	220 V/ 380 V, 50/60 Hz, 2P/3P, 0.75 Kw
Size	L: 1020 mm W: 730 mm H: 1400 mm







Parts & Accessories

- Scrap Crusher
- Rewinder
- Unwinder
- Label Core Cutter
- Rotary Diecut
- Printing Cylinder
- Air-Knife
- Sheet Cutter

Copyright © MOTEX All rights reserved

Manufacturer



■ OFFICE ADDRESS
 MOTEX B/D 3F, 92-4 DANGSAN-DONG 4GA YONGDUNGPO-GU SEOUL, KOREA
 ■ FACTORY ADDRESS
 222-105 NAE-DANG, OJEONG-GU, BUCHEON, KYUNGGI-DO, SOUTH KOREA

Distributor



SALES OFFICE CONTACTS
 ■ Tel : 82-32-682-0900 ■ Fax : 82-32-683-0900
 ■ www.kola.co.kr ■ kola@kola.co.kr
 ■ 4 FL. KOLA B/D. 73 NAE-DANG, OJEONG-GU, BUCHEON CITY, KYUNGGI-DO, SOUTH KOREA